

# Submittal Data Sheet

**Single Package Air Conditioner/Gas Heat**  
**Ultra-Low NOx - 13.4 SEER2, 11.0 EER2 - R-410A - 2 ton to 5 ton**  
**Models: PCG4\*24 to 60 - Single-Phase**

Job name:		Location:		
Purchaser:		Order no:		
Engineer:				
Submitted to:	For:	Ref:	Approval:	Construction:
Submitted by:		Date:		
Unit designation:		Schedule number:	Model number:	

## Product data

<b>Cooling performance</b>	
Total capacity _____	MBH
Sensible capacity _____	MBH
Outdoor design temperature _____	°F DB/WB
Total supply air _____	CFM
Temperature of air entering indoor Coil _____	°F DB/WB
Power input required (Less blower motor) _____	kW
<b>Heating performance</b>	
Gas-fired heat exchanger input/output capacity _____	Btu/h
<b>Supply air blower performance</b>	
Total supply air _____	CFM
Total resistance external to unit _____	IWG
Blower speed (circle) 1 2 3 4 5	
Motor rating _____	HP
Power input required _____	W
<b>Electrical data</b>	
Power supply _____ / _____ / _____	
Total unit ampacity _____	A
Minimum wire size _____	AWG
Maximum overcurrent device _____ Fuse _____ Circuit breaker _____	A
Overcurrent device	
<input type="checkbox"/> Fuses <input type="checkbox"/> Circuit breaker	
<b>Unit weight</b>	
Total unit weight (operational) _____	lb

## Features

- R-410A refrigerant.
- High-pressure switches on all products.
- Outdoor coils are constructed of rifled copper tube with aluminum fins for long-lasting durability and efficient operation.
- Indoor coils are constructed of highly efficient rifled aluminum tubes with enhanced aluminum fins.
- Internal compressor protection (temperature and pressure).
- Standard cooling operation down to 55°F. A low ambient kit to 0°F is available.
- Single-stage gas heat and single-stage cooling.
- Gas heat exchanger design with stainless steel tubes.
- Induced draft post-purge gas control logic.
- Reliable direct spark ignition.
- Ignition control provides a red LED for diagnostic error codes.
- Compact size cabinet with two footprints for installation flexibility.
- Bottom and/or side electrical and gas utility connections.
- Top discharge condenser air design with flush mounted grille.
- Removable base rails with built-in rigging and shipping provisions.
- Unit cabinet is constructed of G-90, powder painted steel, certified at 1,000 h salt spray test according to ASTM-B117 standards.
- Easily field convertible from side to bottom return and supply duct connection.
- Attractive cabinet design with single-piece watershed top cover to extend cabinet life and deter water collection.
- Factory installed, attractive powder painted protection outdoor coil guard.
- Foil face insulation that does not emit fibers into air stream.
- Permanently lubricated outdoor and indoor motors.
- Slide-out blower assembly with standard ECM on all models.
- Non-corrosive condensate pan internally sloped to meet strict requirements of ASHRAE 62-19 Indoor Air Quality standard.

## Warranty summary

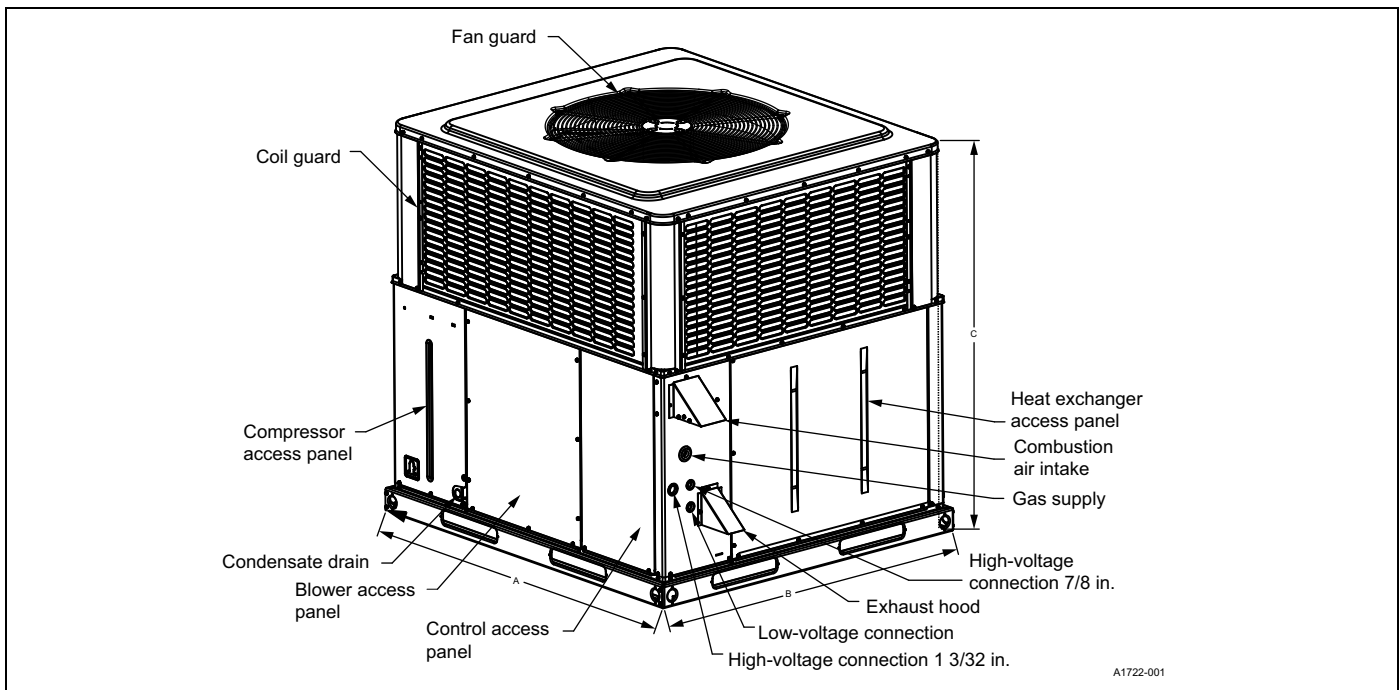
20-year limited warranty on heat exchangers in residential applications and 10-year limited warranty on heat exchangers in commercial applications. Standard 5-year limited parts and compressor warranty. **Extended 10-year limited parts and compressor warranty when product is registered online within 90 days of purchase for replacement or closing for new home construction.** See the limited warranty certificate in the *User's Information Manual* for details.

## Unit clearances<sup>1,2</sup>

Direction	Distance (in.)	Direction	Distance (in.)
Top <sup>3</sup>	36	Power entry (right side)	36
Side opposite ducts	36	Left side	24
Duct panel	0	Bottom <sup>4</sup>	1

1. Provide a 1 in. clearance between any combustible material and the supply air duct work.
2. Do not allow the products of combustion to accumulate within a confined space and recirculate.
3. Install units outdoors. Make sure that overhanging structures or shrubs do not obstruct the outdoor air discharge outlet.
4. You can install units on combustible materials made from wood or class A, B, or C roof covering materials if factory base rails are left in place as shipped.

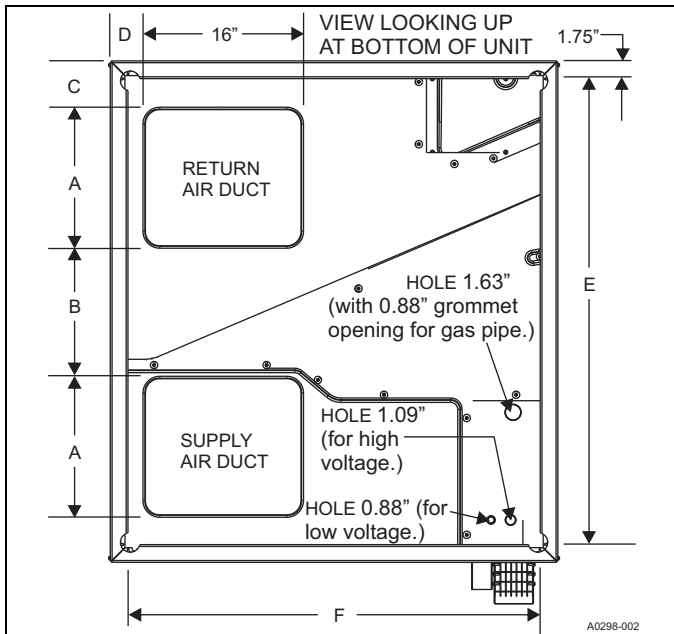




**Unit dimensions and access locations**

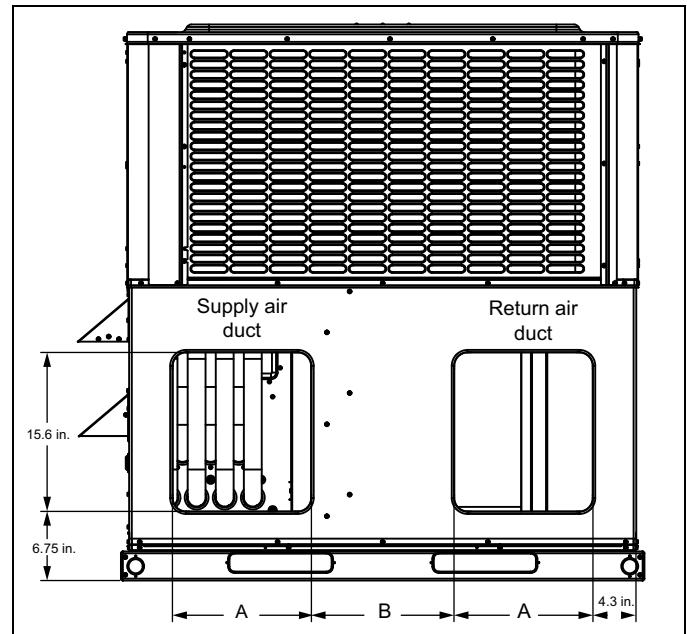
Model	Dimensions (in.)		
	A	B	C
PCG4A240502L1	51 1/4	35 3/4	44
PCG4A360502L1	51 1/4	35 3/4	47
PCG4B480652L1	51 1/4	45 3/4	47
PCG4B600652L1	51 1/4	45 3/4	50

**Bottom duct dimensions (in.)**



Model	A (in.)	B (in.)	C (in.)	D (in.)	E (in.)	F (in.)
24, 36	10	21.5	5	4.5	47.5	32
48, 60	14	13.5	5	3.5	47.5	42

**Rear duct dimensions (in.)**



Model	A (in.)	B (in.)
24, 36	9.6	22
48, 60	13.6	14

Note: See Unit dimensions and access locations for side hole sizes of electrical and gas lines.